

# ScanSnap™ fi-5110EOX2 Quick Installation Guide


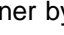
## 1. Check the Contents of the Package

Please read this instruction guide prior to installation of this product.

While unpacking the scanner, check for the following contents.

Scanner and Accessories		
<input type="checkbox"/> Scanner	<input type="checkbox"/> Stacker	<input type="checkbox"/> Getting Started
<input type="checkbox"/> AC adapter	<input type="checkbox"/> AC cable	<input type="checkbox"/> USB cable
<input type="checkbox"/> ScanSnap™ Setup CD-ROM	<input type="checkbox"/> Adobe® Acrobat® CD-ROM	<input type="checkbox"/> Warranty Registration Card <input type="checkbox"/> Warranty Summary Card <input type="checkbox"/> Quick Installation Guide <input type="checkbox"/> Carrier Sheet

### Note:

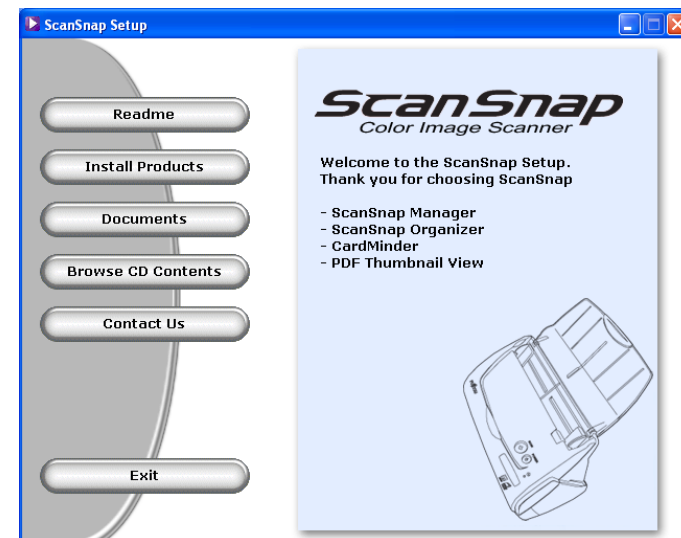
- Install "ScanSnap Manager, Adobe® Acrobat®, CardMinder and PDF Thumbnail View" before connecting the scanner to PC. If the scanner is connected before installing above software, the "Found New Hardware Wizard", click the [Cancel] button to close the wizard.
- fi-5110EOX2 and fi-4110EOX2 can not be installed at the same time. Remove fi-4110EOX2 hardware and driver prior to connecting fi-5110EOX2 scanner.
- When using Windows® 2000 or Windows® XP, log on as administrator.
- Adobe Acrobat 7.0 is not supported by Windows® 98, Windows® 98 SE and Windows® Me Windows® 95 and Windows NT® 4.0
- Do not use cables other than the ones supplied with this product. Use only the specified AC cables and AC adapter.
- Once the scanner is detected the "ScanSnap Manager" icon in the task tray is displayed as . When the icon remains as , restart the scanner by press the [POWER] button on the scanner.

## 2. SOFTWARE INSTALLATION

### Installing ScanSnap™ Manager, Organizer, CardMinder & PDF Thumbnail View

Follow below procedure to complete software installation for ScanSnap™ product:

1. Insert the "ScanSnap Setup CD-ROM" into the CD-ROM drive. "ScanSnap Setup" window appears. Click [Install Products] button. The installation of ScanSnap Manager, ScanSnap Organizer, CardMinder and PDF Thumbnail View starts up.



2. Installshield wizard's window will appear, select [Typical], click on [Next>] and follow the instructions on the screen to complete installation.
3. Restart your PC once the installation is completed.

### Installing Adobe® Acrobat®

Please prepare Adobe® Acrobat® CD-ROM.

1. Insert "Adobe® Acrobat® CD-ROM" into the CD-ROM drive.
  - ⇒ "Adobe® Acrobat® AutoPlay" is displayed.
  - If this window is not displayed automatically when "Auto play" setting of your PC is off, please run "AutoPlay.exe" on this CD-ROM directly using "Windows Explorer".
2. Select [Install Adobe® Acrobat®].
3. Select language and click [OK] to proceed with installation.

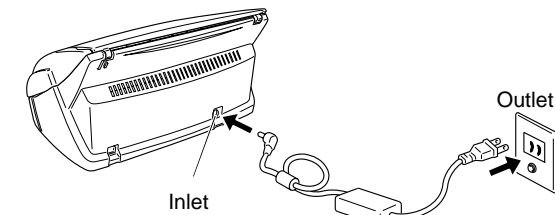
After the setup window is displayed, continue the installation by following the instructions on the window.

4. Select the next button
5. Select finish button and restart the computer.

## 3. Connecting the Scanner

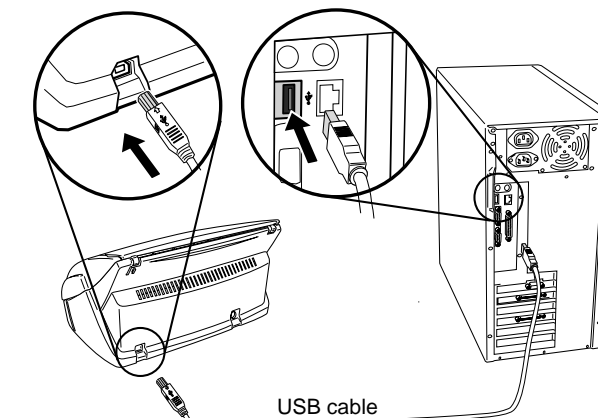
### Connecting the AC cable

1. Connect the AC cable to the AC adapter.
2. Insert the connectors of the AC adapter to the scanner inlet and power outlet.



### Connecting USB cable

1. Connect the USB cable to the Interface connector on the back of the scanner. Insert the other end of the USB cable into the USB port on the Computer.



2. The scanner will be detected automatically.

## 4. ScanSnap™ INSTALLATION

### Installing ScanSnap™ Hardware

Follow below procedure to complete ScanSnap™ installation:

1. Follow step 2 to install scanner software.
2. Restart the PC.
3. Follow step 3 to connect the scanner.
4. Scanner will be automatically detected.

### For Windows® 98

Windows® 98 CD-ROM is required to complete the installation. When the message appeared, insert the OS installation CD into the CD-ROM drive and click [OK] to continue.

### For Windows® Me

The new hardware is detected and the installation Completes automatically.

### For Windows® 2000

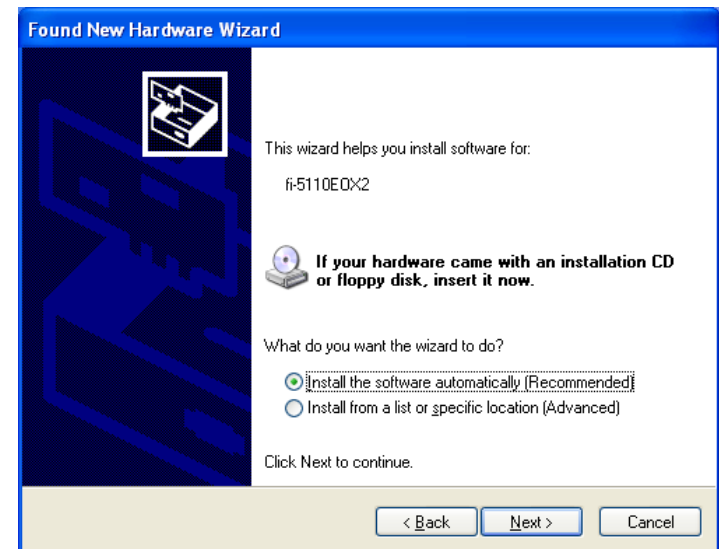
When [Digital Signature not Found] appears, click the [Yes] button.

### For Windows® XP

1. If [Found New Hardware Wizard] appears, select [No, not this time] and click the [Next>] button, otherwise go to next step



2. When [Hardware Installation] appears, click the [Next>] button.



3. Click the [Finish] button when the installation completed.

## Contact Information

**FUJITSU COMPUTER PRODUCTS OF AMERICA, INC.**

2904 Orchard Parkway, San Jose, CA 95134-2009, U.S.A.

Phone: (800) 626-4686  
(408) 432-6333

Web site: <http://www.fcpa.fujitsu.com/>

E-mail: [info@fcpa.fujitsu.com](mailto:info@fcpa.fujitsu.com)



\*PA93005-Y377\*